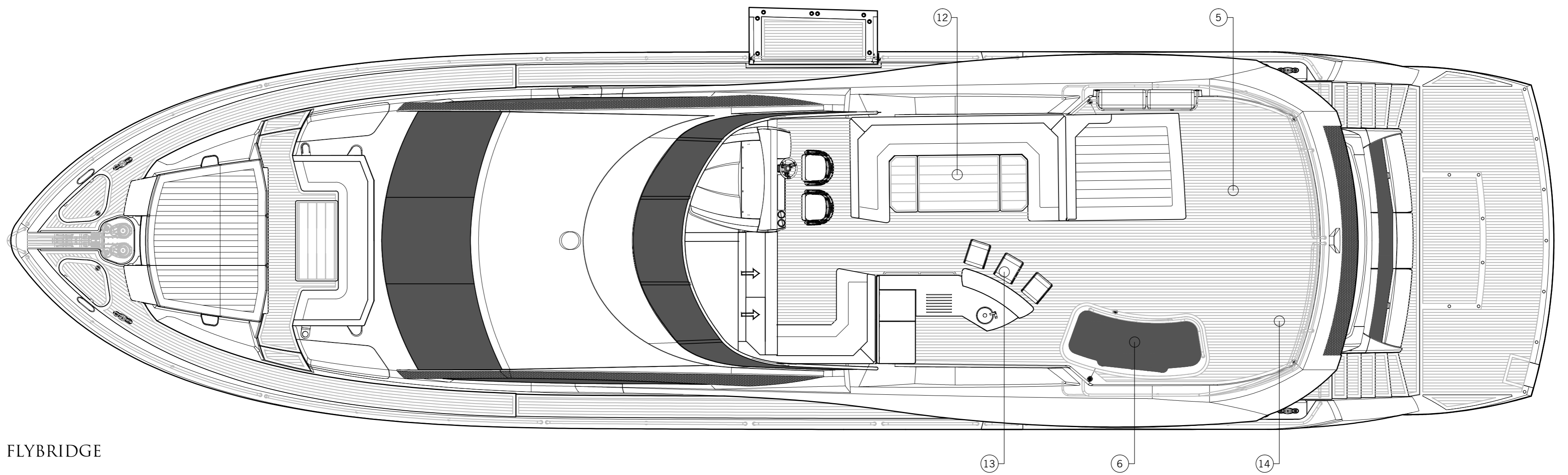
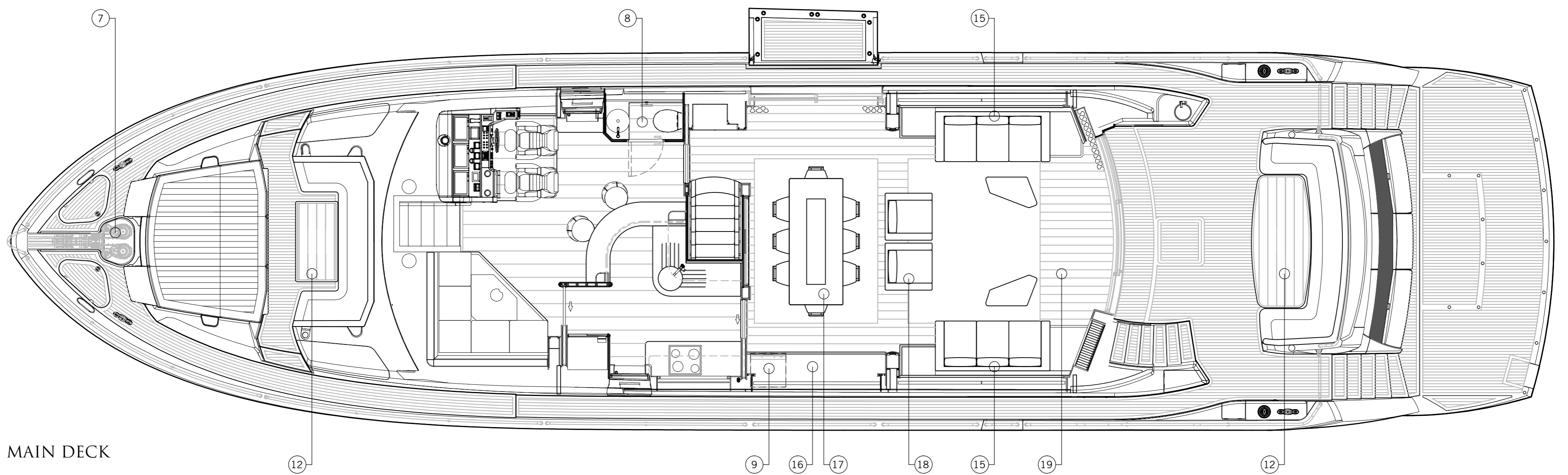


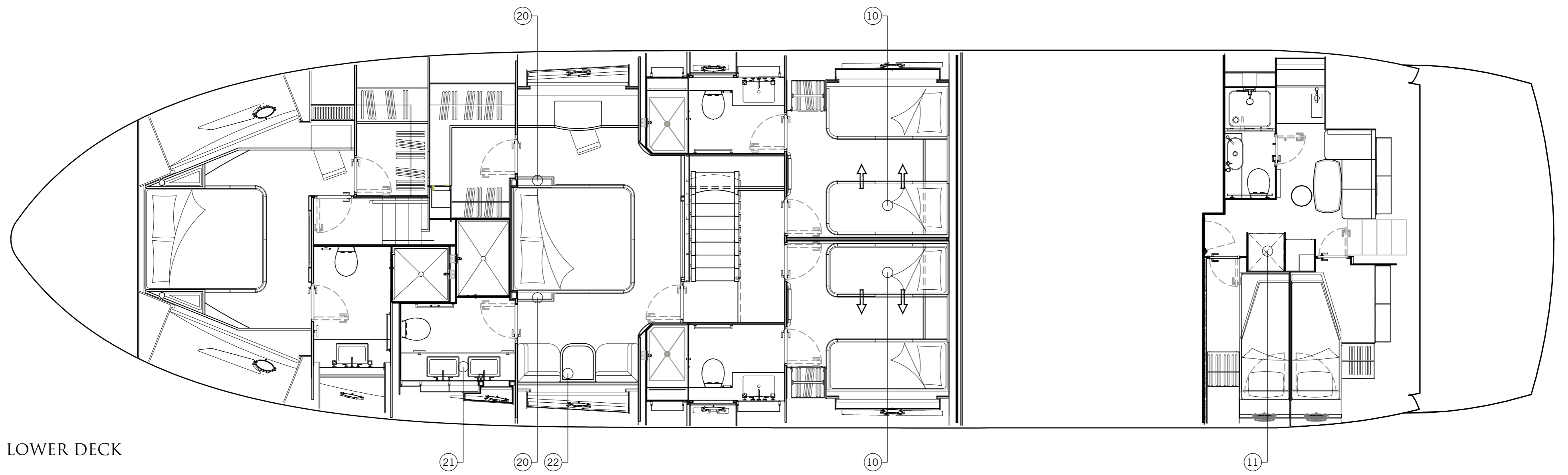
PROFILE



FLYBRIDGE



MAIN DECK



LOWER DECK

NO.	DATE	CHANGES FROM STANDARD	NO.	DATE	CHANGES FROM STANDARD	NO.	DATE	CHANGES FROM STANDARD
1	26-04-18	Option - Carbon wrap to eyebrows, coachroof in white	11	26-04-18	Option - Separate washing machine and tumble dryer	21	12-06-18	Special - Twin basin arrangement as per 8471786
2	26-04-18	Option - Hardtop	12	12-06-18	Option - Feature inserts not required on exterior tables	22	12-06-18	Option - Breakfast table with two seats
3	26-04-18	Option - Black radar chair	13	12-06-18	Option - 3x Bar Stools	23	08-10-18	Option - Black Dummy Dome
4	26-04-18	Option - Black waterline boot top	14	12-06-18	Option - Preparation for future fit of optional Flybridge Hydraulic Crane			
5	26-04-18	Option - Flybridge teak decking	15	12-06-18	Special - Custom sofa port & stbd as per 8561886			
6	26-04-18	Option - Companionway hatch	16	12-06-18	Special - Custom sort side console			
7	26-04-18	Option - Twin anchor arrangement	17	12-06-18	Special - Rectangular dining table			
8	26-04-18	Option - Main deck dayhead	18	12-06-18	Special - 2x Armchairs			
9	26-04-18	Option - Wine cooler	19	12-06-18	Option - Wooden flooring with inset carpet in saloon & dining area			
10	26-04-18	Option - Sliding inboard berth	20	12-06-18	Special - Rectangular bedside storage units as per 8471786			

PROJECT NO: 4
 DATE: 08.10.18
 MODIFICATION: See Spec Note 23
 DRAWING NUMBER: S185
 VESSEL NAME: 86 YACHT
 DRAWING NUMBER: 8661986
 DESIGN OFFICE: SUNSEEKER INTERNATIONAL LIMITED
 TECHNICAL CENTER
 MANSFIELD ROAD
 FOSDICK DOCKERY
 ENGLAND
 BH12 4NL
 TEL: +44 (0)1252 812122 FAX: +44 (0)1252 812123
 WWW.SUNSEEKER.COM
 CUSTOMER GENERAL ARRANGEMENT
 S185-98-995-001
 SHEET: 1 OF 1